



GENERAL

Vessel Name	Cormorano II
Flag And Port Of Registry	Italian – 1TP 1323
Call Sign	ILBO
MMSI	247
Shipyard	Equitable & Co. – New Orleans. LA
Class	National Coastal Navigation Within 20 From Coast –Scientific Or Research – Crew Boat
Basic Functions	– Supply Vessel
Construction Material	Steel
Build Year	1974 Refurbished In 2023

MAIN PARTICULARS

Length Overall	19.81
Beam Moulded	4.88 m
Gross Tonnage	47.60 GT
Net Tonnage	32.37 NT
Draft	Fwd 0.5 m – Aft 1.17 m
Dept	2,0 m

TANK CAPACITIES

Gasoil	3500 Lts
Potable Water	2000 Lts
Sewage	200 Lts

PERFORMANCE

Service Speed	10 knots
+ Fuel Consumption	100 Kg/h @ econ speed
Max Speed	16 Knots -
+ Fuel Consumption	200 Kg/h @ full speed
Fuel Consumption in Port	20 Kg/Average per Day

MACHINERY & PROPULSION

Main Engines	2 (Two)	Detroit Diesel 12v71N 437HP each
Propeller		2 FIXED PROPELLER – DRIVE SHAFT

Safety equipment and means are present according to law terms

ACCOMODATIONS

Passenger	12
Crew	3 Beds
Scientist	32

AUXILIARY EQUIPMENT

Networks	230V - 50 Hz
Main Generator Sets	1 LOAN - 12 ekW at 1500 rpm

DECK LAY-OUT

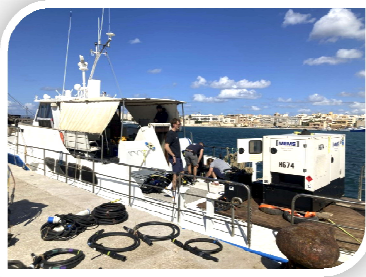
Anchor Mooring Winch	1x electric, with warping head
Split Net Drum	1x hydraulic, 10 t pull
Trawl Winches	2x hydraulic, each 7 t pull
Cod End Winch	1x MANUAL, 2.5 t pull
Main Deck Area	40 m² @ 1 t/m²
Aft A-Frame	fixed
Deck Crane	1x 0,5 tm / 3 m max. outreach
Side pipe	yes
Stern Platform	6 m² (4m x 1.5 m)
Tender Boat	3.50 m 25 Hp
Deck Cargo Capacity	9 Tons max

COMMUNICATION EQUIPMENT

GMDSS	Area A1	Mf, Hf, Ssb , 2 Vhf Dsc Epirb, Ais, Mob Sart
-------	----------------	---

NAUTICAL

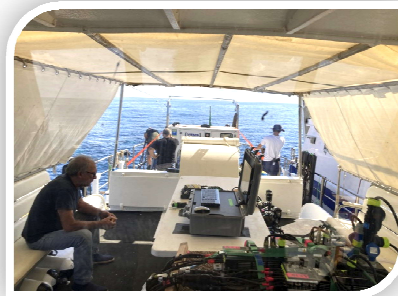
2x Dgps Autopilot x-Band Radar Echo Sounder Ecdis Radar



-Transporting And Using Practically Any Type Of Instrumentation Compatible With Its Size And The Geographical Area In Which It Is Able To Operate (The Entire Mediterranean With 20 Nautical Miles Limitations On Distance From The Coast)

- Oceanographic Research (Biology, Chemistry And Physics) In The Littoral, Coastal Areas

WET LABORATORY

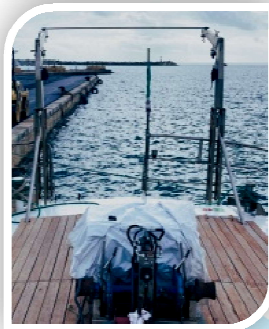


- Surface And Depth Data Collection (CTD, Continuous Water Sampling, ADCP, Echo Sounder, Hydrophones)

- Towing And Use Of Rovs, AuvS, Oceanographic Buoys And Current Measuring Chains

- Transport And Use Of An Auxiliary Boat

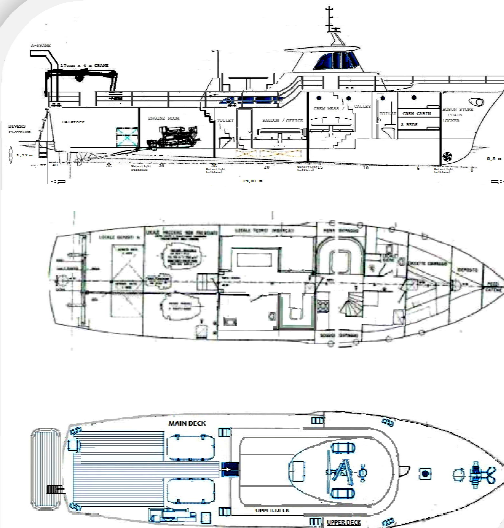
- Support For Operations With Divers



- Precision Navigation For Long

FIXED A-FRAME

AFT WINCH



- Installation And Use Of Nets For Scientific, Pelagic And Bottom



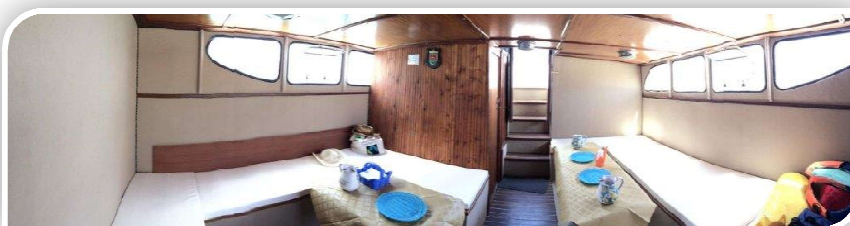
Fishing
-Shape Of The Hull And Propeller, Chosen To Minimize The Draft. Periods And At Low Speed

The Ship Is In Fact Equipped With A Gray Water System That Serves All The Waste,

DECK CRANE 360*

Finally, Accommodations And Systems With Low Levels Of Acoustic Emissions.

OFFICE & DATA CONTROL ROOM



© No part of the leaflet may be reproduced in any form, by print, photo print, microfilm, or any other means, without written permission from Sea 360 S.r.l.